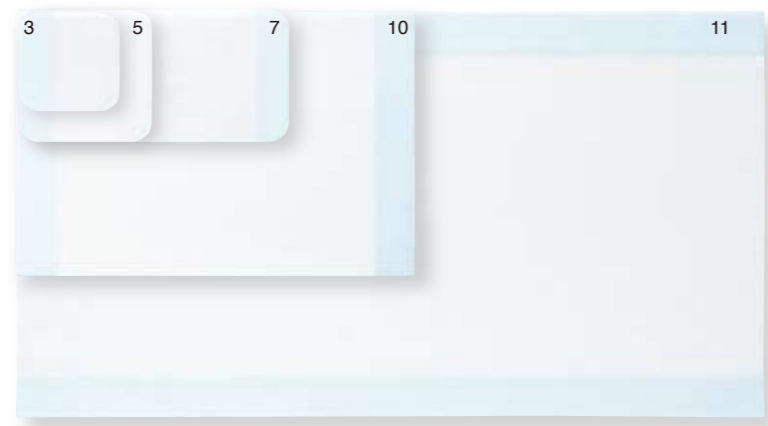


Wide range of sizes available

SI-AID is available in a wide range of sizes, from 75mm x 75mm to 300mm x 550mm, which can be applied to bigger sites such as the trunk.



Instruction for SI-AID

Be sure to read the package insert carefully before use.



1. Peel off the film

Clean and wash, and disinfect the application site if necessary, then carefully dry the skin surrounding the wound. Hold the tab of the backing film of SI-AID (white) (blue) and peel it off.



2. Apply

Peel off the backing film without touching the effective surface, and then cover the wound.



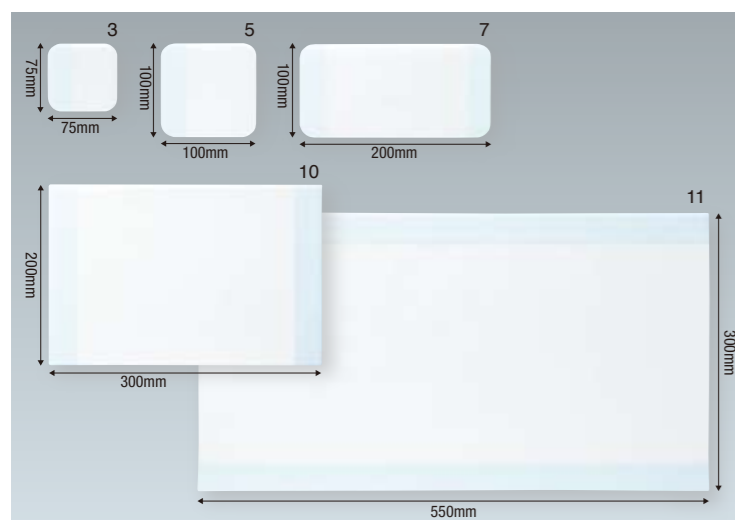
3. Anchor

Anchor the SI-AID with adhesive tape or bandages.



How to peel it off

Slowly peel off the SI-AID while holding the skin down.



SI-AID

Type	Product Code No.	Specification (width x length)	Contents Per Box
3	18751	75mm x 75mm	50 pcs
5	18752	100mm x 100mm	50 pcs
7	18753	100mm x 200mm	30 pcs
10	18754	200mm x 300mm	10 pcs
11	18755	300mm x 550mm	5 pcs

EOG STERILE

for Best Care **ALCARE**

SILICONE-FACED WOUND DRESSING SI-AID

New Solution for Wound Treatment

SI-AID



SI-AID, produced using silicone technology. This advanced dressing material offers new solutions for wound treatment.

Pain when changing dressings, adhesion to dried blood or exudates... These make life hard for both healthcare professionals and patients. There is an urgent need for techniques to prevent this adhesion and the resultant pain and stress.

SI-AID adopts a unique silicone-based technology that reduces pain and tissue damage when dressings are being replaced, and which achieves more effective wound treatment.

SI-AID significantly reduces pain during wound treatment, from when it is applied till peeled off. We have created a new solution for dressing materials.

ALCARE

ALCARE Co., Ltd.

International Sales Unit
19F, Arcacentral Bldg., 1-2-1 Kinshi, Sumida-ku, Tokyo 130-0013, Japan
TEL.+81-3-5611-7819 FAX.+81-3-5611-7827 MAIL. info@alcare.co.jp
www.alcare.co.jp/e

Printed in China
Oct. 2011

ALCARE Co., Ltd.

www.alcare.co.jp/e

SI-AID, a silicone gel dressing that adheres flexibly and softly and minimizes wound disturbance

Upon application Fast and easy application. Free-cut into any shape is thus suitable for any site

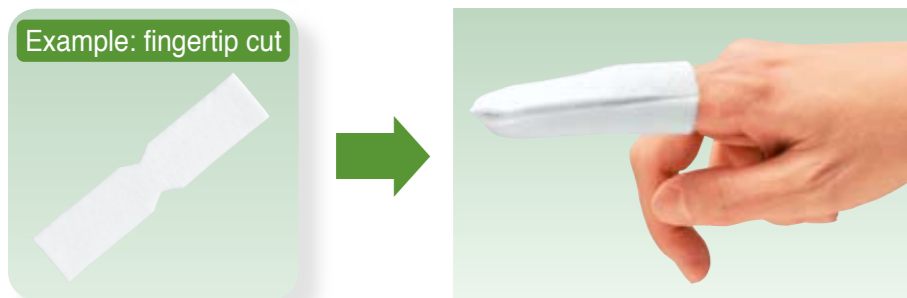
It readily attaches, even to vertical or downward-facing sites, so that anchoring by tape or bandages can be done quickly, even by the patient. It can be used for wounds at virtually any site, since it can be cut to any shape.

Its adhesive properties ensure ease of use.



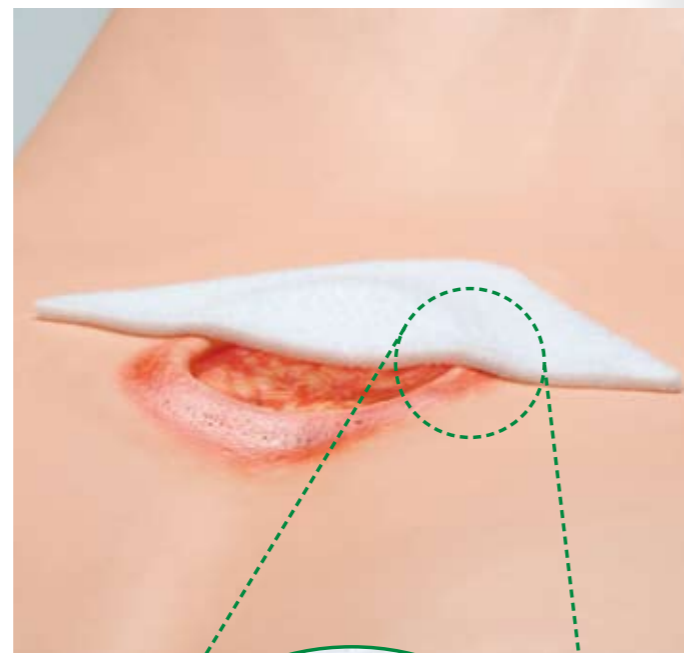
Since it has enough adherence, you can tape the dressing material without having to hold it in place

Allows use at various sites

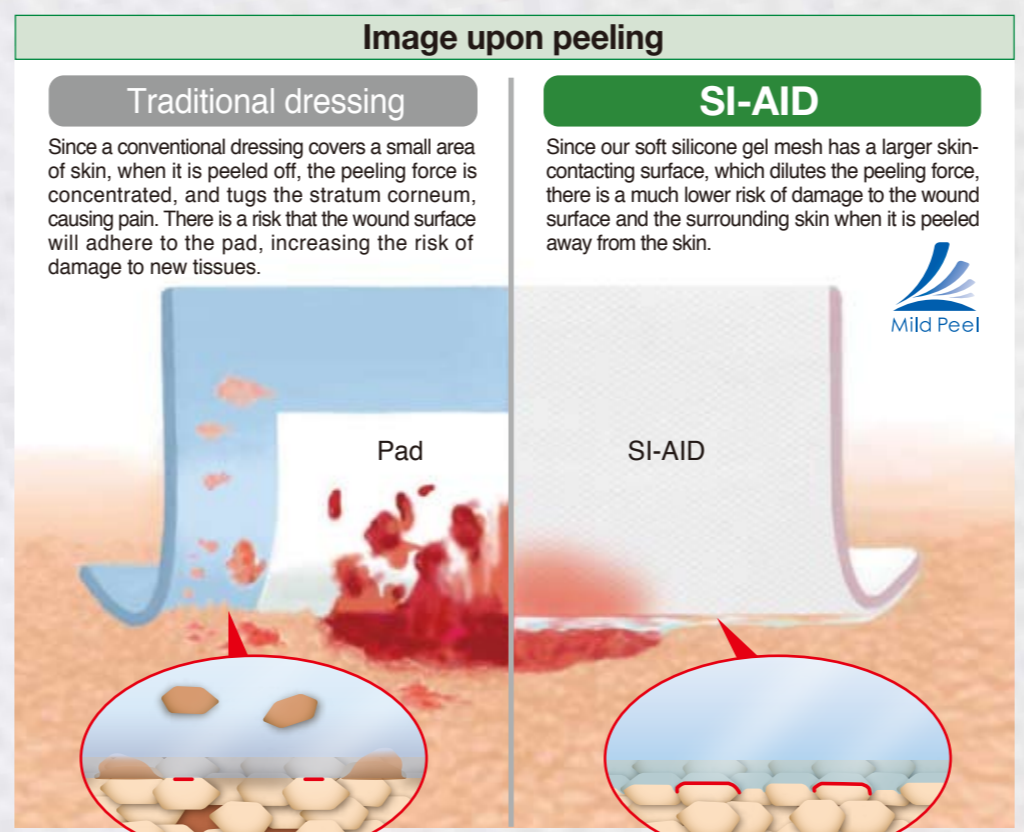


During application Less slippage and reduced damage to new tissues

SI-AID's silicone gel mesh reduces slippage between the dressing and the wound surface, by softly adhering to the skin around the wound. It lessens damage to new tissues and ensures minimum wound disturbance.



Upon peeling Our silicone adhesion technology minimizes damage to the wound surface and the surrounding skin

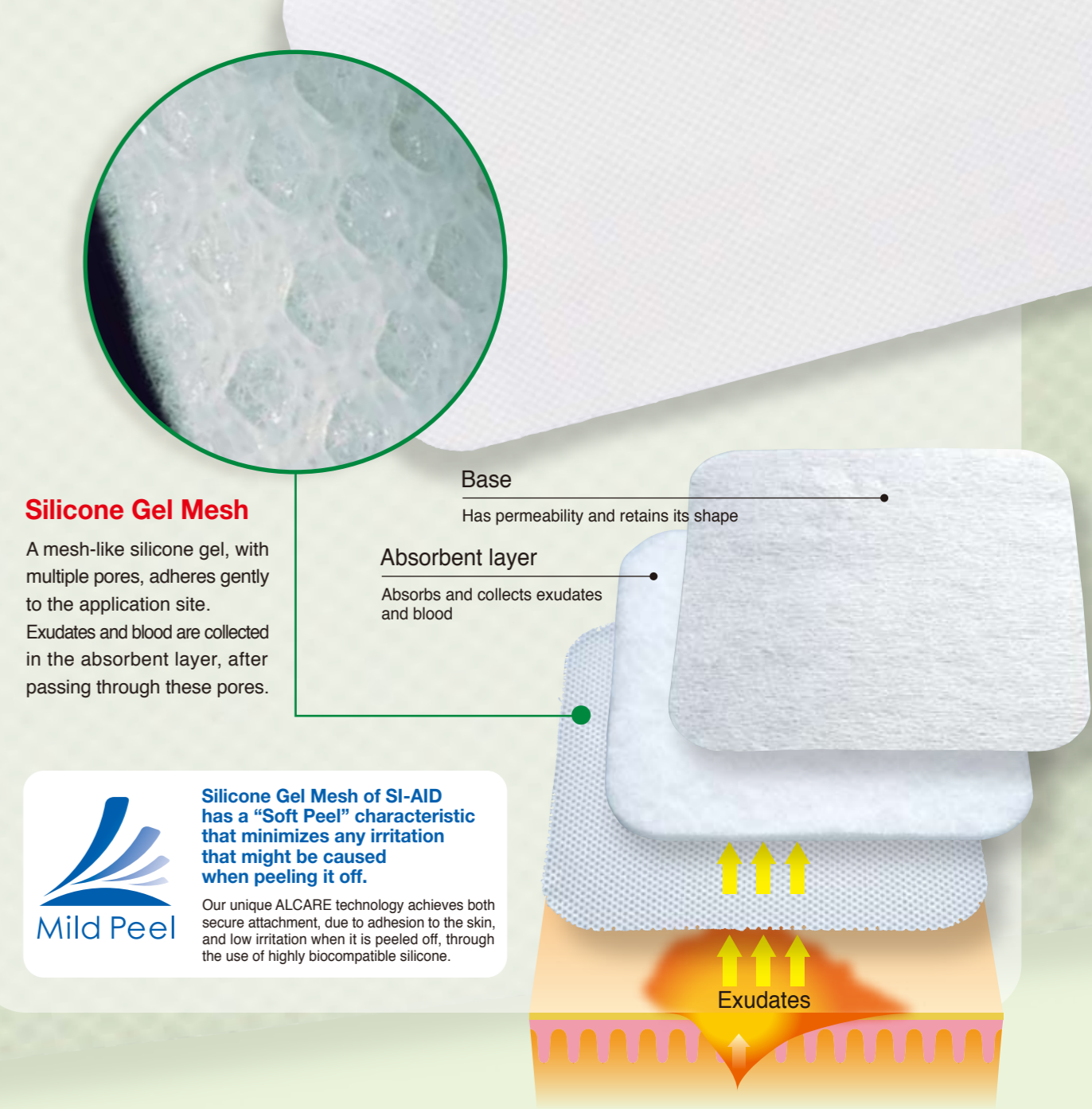


Example : SI-AID in use



Structure of SI-AID

Adheres gently to the skin around wounds and absorbs any exudates by means of its silicone adhesion technology. It has an integral structure consisting of a unique **Silicone Gel Mesh** plus an absorbent layer.



Silicone Gel Mesh

A mesh-like silicone gel, with multiple pores, adheres gently to the application site. Exudates and blood are collected in the absorbent layer, after passing through these pores.

Base

Has permeability and retains its shape

Absorbent layer

Absorbs and collects exudates and blood



Silicone Gel Mesh of SI-AID has a "Soft Peel" characteristic that minimizes any irritation that might be caused when peeling it off.

Our unique ALCARE technology achieves both secure attachment, due to adhesion to the skin, and low irritation when it is peeled off, through the use of highly biocompatible silicone.